

JLMJ CONSULTING

NACE # 18375

Subject: H₂Poxy-A and MAXON-HW effect on Pull Strength (on pavers)

Filling Date: 05/13/2020



Samples described from left to right

Base		Paver coated HW		White paver H2A only		Black H2A/HW	
lb/in ²	N/mm Mpa	lb/in ²	N/mm Mpa	lb/in ²	N/mm Mpa	lb/in ²	N/mm Mpa
1. 205.	1.5	1. 300.	2	1. 450.	3.5	1. 530.	4.5
2. 210.	1.5	2. 310.	2	2. 440.	3.5	2. 569.	4.5
3. 220	1.5	3. 320.	2	3. 460.	3.5	3. 590.	4.5
Avg. 212.	1.5	Avg. 310.	2	Avg. 450.	3.5	Avg. 563.	4.5

Continued on Page 2

JLMJ CONSULTING

NACE # 18375

Subject: H₂Poxy-A and MAXON-HW effect on Pull Strength (on high strength concrete)

Filling Date: 05/13/2020



Base		HW only		H2A only Black		H2A/HW Black	
<u>lb/in²</u>	<u>N/mm Mpa</u>	<u>lb/in²</u>	<u>N/mm Mpa</u>	<u>lb/in²</u>	<u>N/mm Mpa</u>	<u>lb/in²</u>	<u>N/mm Mpa</u>
1. 300	2	1. 460	3.4	1. 600	4	1. 670	4.3
2. 325	2	2. 500	3.6	2. 420	4	2. 680	4.3
				3. 637	4	3. 640	4
Avg. 312.5	2	Avg. 480	3.5	Avg. 619	4	Avg. 663	4.2

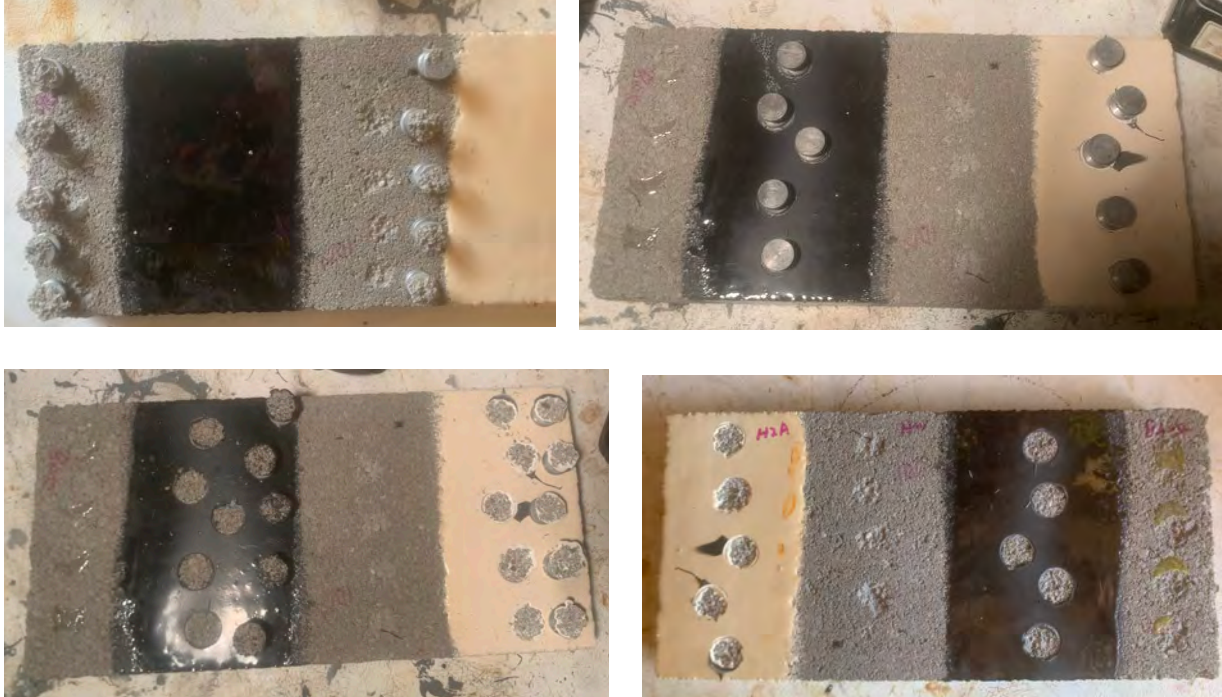
Continued on Page 3

JLMJ CONSULTING

NACE # 18375

Subject: H₂Poxy-A and MAXON-HW effect on Pull Strength (on common concrete)

Filling Date: 05/13/2020



End column of uncoated concrete
Base pulls on common strength concrete cap

Base		White column of H2A		Black column HW/H2A	
lb/in2.	N/mm2 Mpa	lb/in2.	N/mm2 Mpa	lb/in2.	N/mm2 Mpa
1. 100.	1	1. 300.	2	1. 340.	2.5
2. 102.	1	2. 310.	2	2. 350.	2.5
3. 100.	1	3. 305.	2	3. 345.	2.5
4. 110.	1	4. 315.	2	4. 350.	2.5
5. 115	1	5. 310.	2	5. 355.	2.5
Avg. 105.	1	Avg. 305.	2	Avg. 348.	2.5

Coat with HW middle Column between
white and black concrete substrate

1. 199.	1.5
2. 205.	1.5
3. 210.	1.5
4. 220.	1.5
5. 230.	1.5
Avg. 213.	1.5

Strength has increased 100%

John Leroy Mack Jr.

NACE # 18375